

Bungalow 1905–1940

One or one-and-a-half story house. Low-pitched roof with widely overhanging eaves and prominent dormer. Full or partial front porch. Prominent chimneys and porch piers of field stone, rubble or rough-faced brick.



201 South Union
City Building



110 East Front



104 West Front

DOWNTOWN LOOP 1.0 MILE

Connecting the outlying trail system with downtown, this trail passes the Carroll County Courthouse, the City Building and follows streets through beautiful residential and commercial portions of Delphi.

The Carroll County Historical Museum is located in the southwest corner of the Courthouse. Restaurants, coffee shops, boutique and antique stores abound on and near the Courthouse Square.

1. 201 S. Union, City Building, Romanesque Revival, 1928

Presently home of Delphi's city government, this structure was built in 1928 and formerly served as the National Guard Armory. Notice "Armory" within the wrought iron above the door along Main Street. It also served the community as the site for band events, High School basketball games and many other activities.

2. 206 S. Union, Gothic Revival, 1885

3. 219 S. Union, Italianate, c. 1809

Note the similarly styled carriage house in back.

4. 115 E. Front, Bungalow, c. 1915

5. 116 E. Front, Gothic Revival, c. 1850

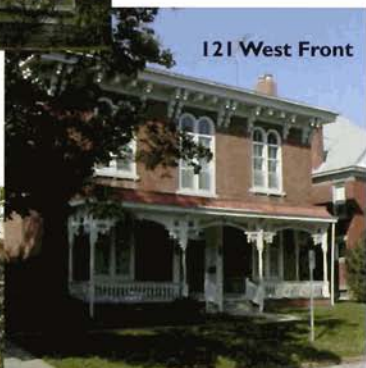
6. 110 E. Front, Bungalow, c. 1915

7. 104 W. Front, Queen Anne, c. 1890

Notice the curved windowpanes on this gem that housed the Hamling family for nearly eighty years.

Vernacular Victorian 1870–1910

Simplified house form with T, L or rectangular plan, embellished with details derived from Queen Anne or Italianate. Most detailing is manufactured wood applied at cornice of porch.



8. 115 W. Front, Free Classic, c. 1895

9. 121 W. Front, Italianate, 1858

Built by Enoch Rinehart, a paperbanger and early Sheriff of Carroll County. The Rinehart paper mill was said to be the greatest paper-manufacturing center in western Indiana. The former paper mill office sat behind the house. This house is listed in Wilbur Pent's book of Indiana houses. Its paired windows and ornamental porch are unique. Isabel Rinehart Baum, Enoch Rinehart's grand-daughter lived in the house for 90 years. Additionally, Abraham Lincoln stopped over here before serving as President.

10. 203 W. Front, Greek Revival with Italianate details, 1856

This gable-front Greek Revival home features wide frieze board with dentil molding, six over six double-bung windows, stone lintels and sills with Italianate brackets.

11. 206 W. Front, Bungalow, c. 1915

12. 208 W. Front, Bungalow, c. 1915

13. 216 W. Front, Gothic Revival, c. 1855

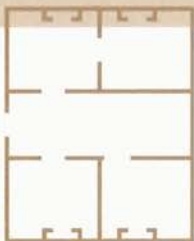
14. 220 W. Greek Revival, 1840

15. 303 W. Front, Italianate, 1863

Built by C. A. Wood, papermaker. Wood also operated a large flax mill and lime kilns. Note the complimentary garage, maintaining the style of the home with materials used and windows selected. The unique shape of the door is an excellent feature.

Double-Pile

Vernacular style double-pile houses are typically rectangular in plan, two or two-and-one-half stories in height, 2 rooms wide and 2 rooms deep. These homes exhibit either gable or hipped roofs.



**Homes
that have
sheltered
families for
decades.**



16. 304 W. Front, Italianate, c. 1855

*This house has the only cupola in Delphi. The paired arched windows are unique. The porch, a later addition, changed the appearance. Mr. & Mrs. Bert Maybill and sons lived in the home for many years. He was a State Representative and owner of the **Delphi Journal**, Republican newspaper. His wife was a news correspondent and published books on Carroll County history.*

17. 315 W. Front, Greek Revival with Italianate details, c. 1855

This home still features the original cut stone foundation and coal chute.

18. 318 W. Front, Greek Revival, c. 1840

19. 321 W. Front, Italianate, c. 1860

Home of Mabel Fraser, important woman in Republican politics from the 1930's to 60's. The porch was a later addition.

20. 322 W. Front, Italianate, c. 1855

21. 404 W. Front, Italianate, c. 1880

*Previously the home of Robert Alexander Wason, Delphi author who wrote novels with Western themes like **Happy Hawkins**, **Friar Tuck**, and a book about the contemporary robber barons, **The Knight Errant**.*

22. 414 W. Front, Carpenter Built, c. 1905

Notice the copper roof on top of the porch. Customary for the time.

23. 416 W. Front, Bungalow, c. 1820

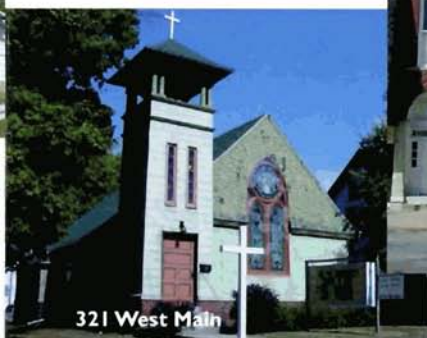
24. 419 W. Front, Queen Anne, c. 1875

25. 420 W. Front, Bungalow, c. 1920

The cut stone porch is a unique feature of this home.

I-house

Vernacular style built mid to late 19th century. Some believe they were referred to as an I-house because these homes were common during the settlement period in IN, IL, and IA (or the "I" states).



26. 423 W. Front, Italianate, c. 1860

27. 424 W. Front, Bungalow, c. 1920

This home has a decorative porch fascia.

28. 404 W. Main, English Cottage, c. 1860

29. 403 W. Main, Greek Revival, c. 1855

30. 321 W. Main Delphi Community Church of God, Arts & Crafts, c. 1901 and 315 W. Main Parsonage, Double-Pile, c. 1860

Previous site of St. Mary's Episcopalian, one of Delphi's original churches.

31. 111 South Illinois, I-house, c. 1880/c. 1910

32. 316 W. Franklin, Central Passage, c. 1845

33. 315 W. Franklin, Gothic Revival/Italianate, 1865

34. 222 W. Franklin, Bungalow, 1910

35. 201 W. Franklin, Post Office, Institutional, 1936

36. 119 W. Franklin, Commercial 20th Century, c. 1910

Years ago the Swatts & Metsker Livery, Feed and Sale Stable was at this location.

37. 115 W. Franklin, Italianate, c. 1885,

G.M. Knight Building, built in 1899 by M.A. Ryan, housed Moose lodge from 1946-1964. The arched entryway over the doors is a typical depiction of commercial Italianate.

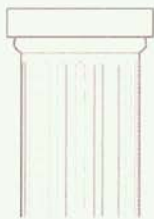
38. 111 W. Franklin, Commercial Italianate, c. 1860

39. 105-101 W. Franklin, Commercial Building, Italianate, c. 1855

This structure was previously home to the New York Store and Clifford Grocery.

Neoclassical 1895–1930

Bold & symmetrical in form and lavish in detail. Elaborate Greco-Roman classical details such as freestanding columns, heavy moldings, pediments, and balustrades applied to facade.



Carroll County Courthouse



40. Carroll County Courthouse, Neoclassical, 1917

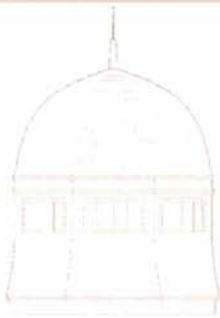
This courthouse cost \$171,000 to construct. The exterior is Indiana sandstone. Doric columns, round and oval wreaths at the top corners, curved decorations around the clocks and swags of carved fruits and vegetables between the second and third floor windows add delicate touches. Inside, a mosaic floor of colored tiles in the rotunda is balanced by a stained glass dome. Sixteen marbleized columns on the first floor are duplicated in smaller numbers on the second and third. Pure marble door frames and steps lead from room to room and floor to floor. On the third floor, the Circuit Court Room has been completely renovated. Be sure to visit the Historical Museum in the basement to find out more about historic Delphi.

41. Mural on building at 101 S. Washington

The youth group from Living Faith Church of the Brethren began this mural during the summer of 2000. The eight people selected represent a historical progression of the area. There was a deliberate decision to include women as well as men, artists as well as engineers. Each of them gave from their hearts, meeting some opposition but ultimately pursuing a dream, just like the kids who created this mural. For more information on the mural see the brochure "Pursue the Dream" available from the City Parks and Recreation Department.

Queen Anne 1885–1905

Asymmetrical composition with a variety of elements to eliminate a flat facade. Common features include: cross gable roofs, tall chimneys, towers, projecting pavilions with decorative spindles, and stained glass windows.



201 East Franklin



42. 201 E Franklin, Queen Anne, c. 1896

This house has elements of many styles such as stick and Victorian with an Oriental influence in the garret. Solid woodwork, a winding sycamore staircase, pocket doors and sliding glass doors are unique features of the interior. Notice the slate roof, copper gutters and downspouts on the exterior. A restored carriage house also sets this home apart. Joseph E. Ruffing, the first owner, was a jeweler. The house cost \$3,000 to build in 1896.

43. 105 S. Union, Italianate, c. 1875

44. 124 E. Main, Italianate, 1874

The Neiwirth building is one of two downtown buildings presently on the National Register of Historic Places. The other is Delphi City Hall 1865, 1881 commonly known as the Opera House located at 105-109 South Washington Street.

45. 222 E. Main, Delphi Public Library, Neoclassical, c. 1905

The Andrew Carnegie Foundation gave \$10,000 to construct the Delphi Public Library. On September 1, 1905 a cornerstone was laid in place at a simple ceremony. The library was officially finished and dedicated on June 19, 1906 with renovations made in 1990. In support of the library, the Dramatic Club performed at the Armory. The proceeds of that event went toward the purchase of a circulation desk still being used today.